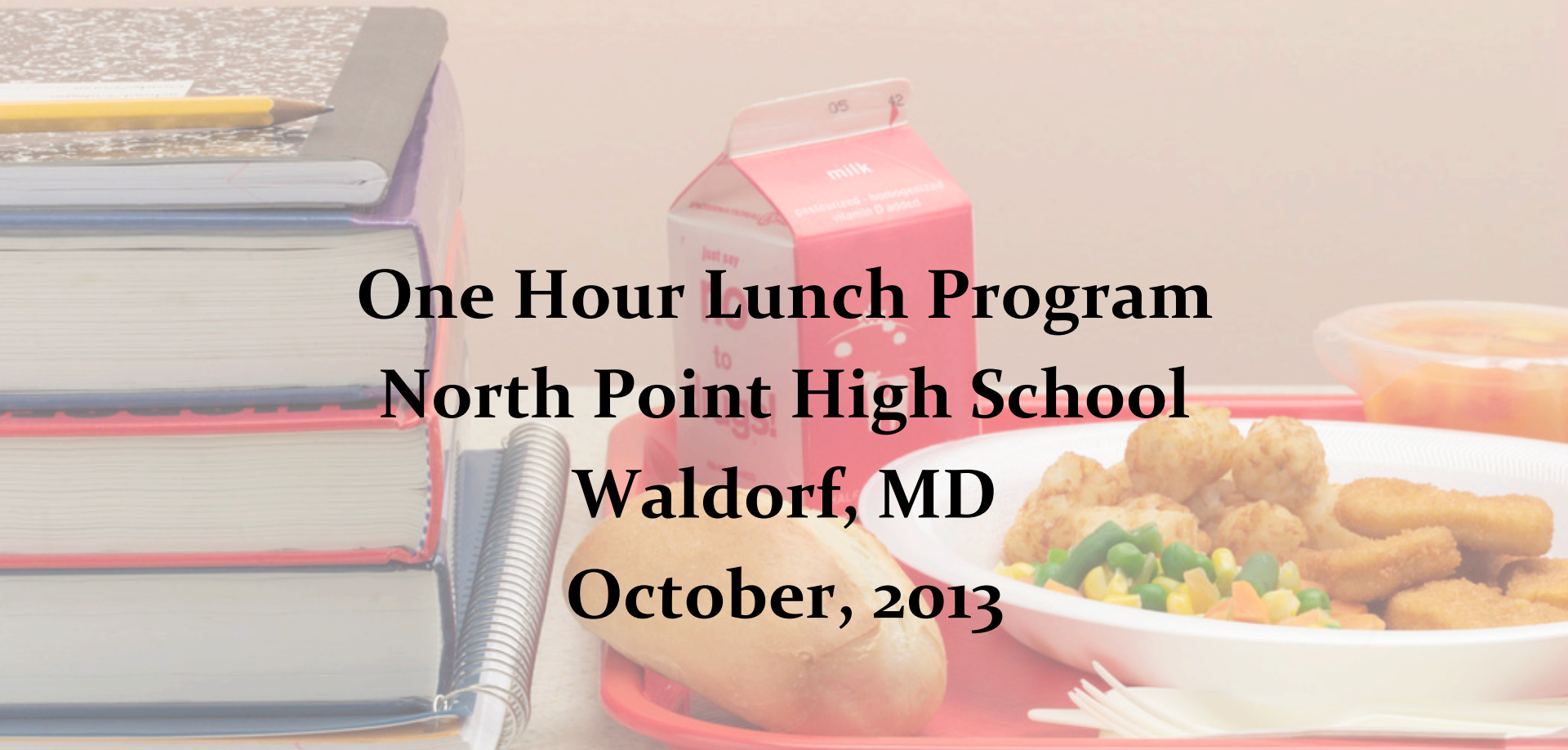


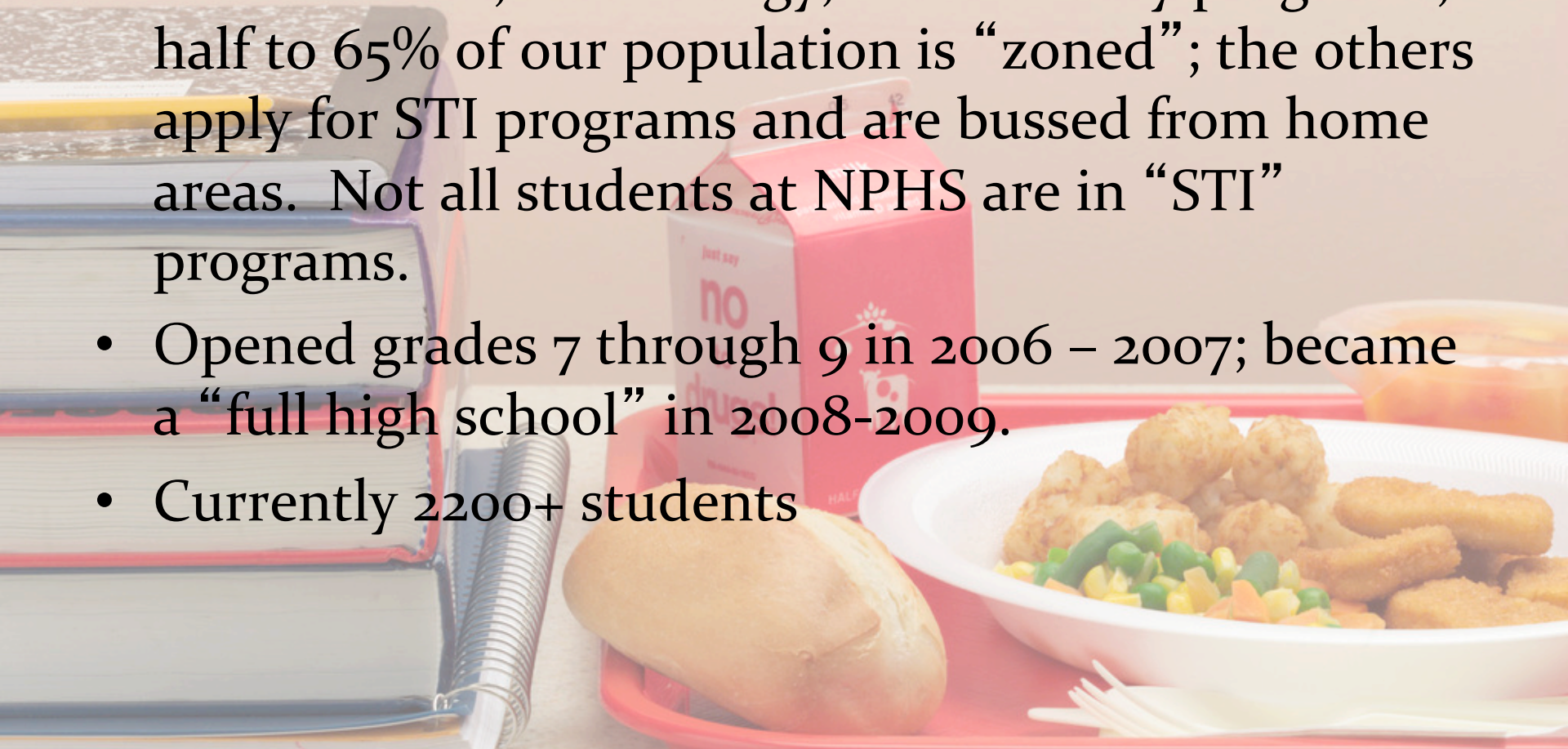
NEST Time

**One Hour Lunch Program
North Point High School
Waldorf, MD
October, 2013**



About North Point High School

- Suburban community
- Offer Science, Technology, and Industry programs; half to 65% of our population is “zoned”; the others apply for STI programs and are bussed from home areas. Not all students at NPHS are in “STI” programs.
- Opened grades 7 through 9 in 2006 – 2007; became a “full high school” in 2008-2009.
- Currently 2200+ students



Student Demographics

- Approximately 2200 students:
 - 52% male/48% female
 - 56.4% African American
 - 33.4% Caucasian
 - 6.3% Asian
 - 3.0% Hispanic
 - >1.0% not listed above
- Approximately 16% Free/Reduced Lunch



Staff Data

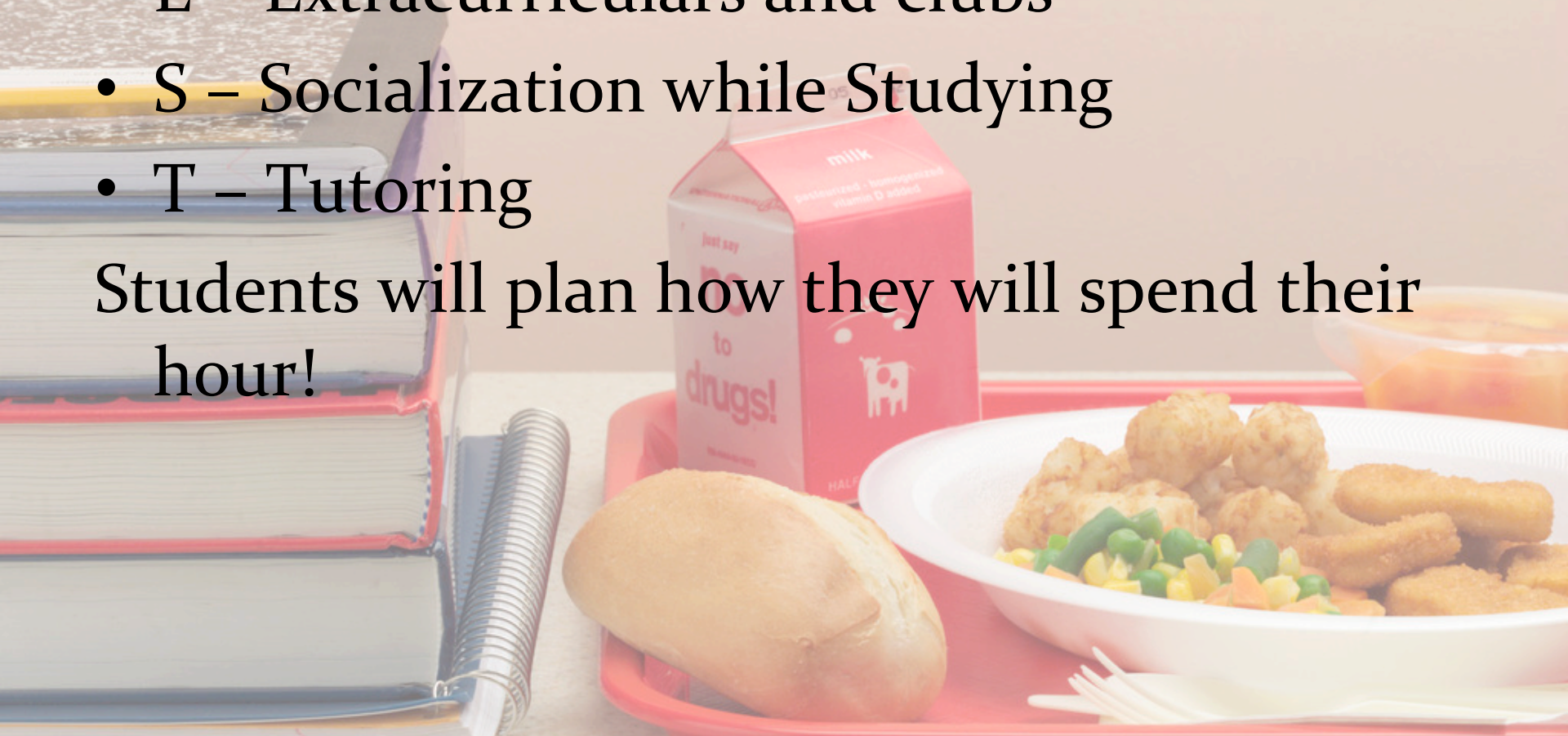
(includes ALL staff, such as BSWs, cafeteria staff, teachers, IA' s)

	2009-2010	2011-2012
Staff Members	257	250
Certificated	171	146
First year	13%	8%
2-5 years	37%	32%
6-10 years	20%	22%
11-15 years	14%	11%
16-20 years	9%	10%
21-25 years	4%	9%
26-30 years	2%	5%
30+ years	1%	3%

What is NEST Time!?

- N – Nourishment (Food! Lunch!)
- E – Extracurriculars and clubs
- S – Socialization while Studying
- T – Tutoring

Students will plan how they will spend their hour!



Discipline Data

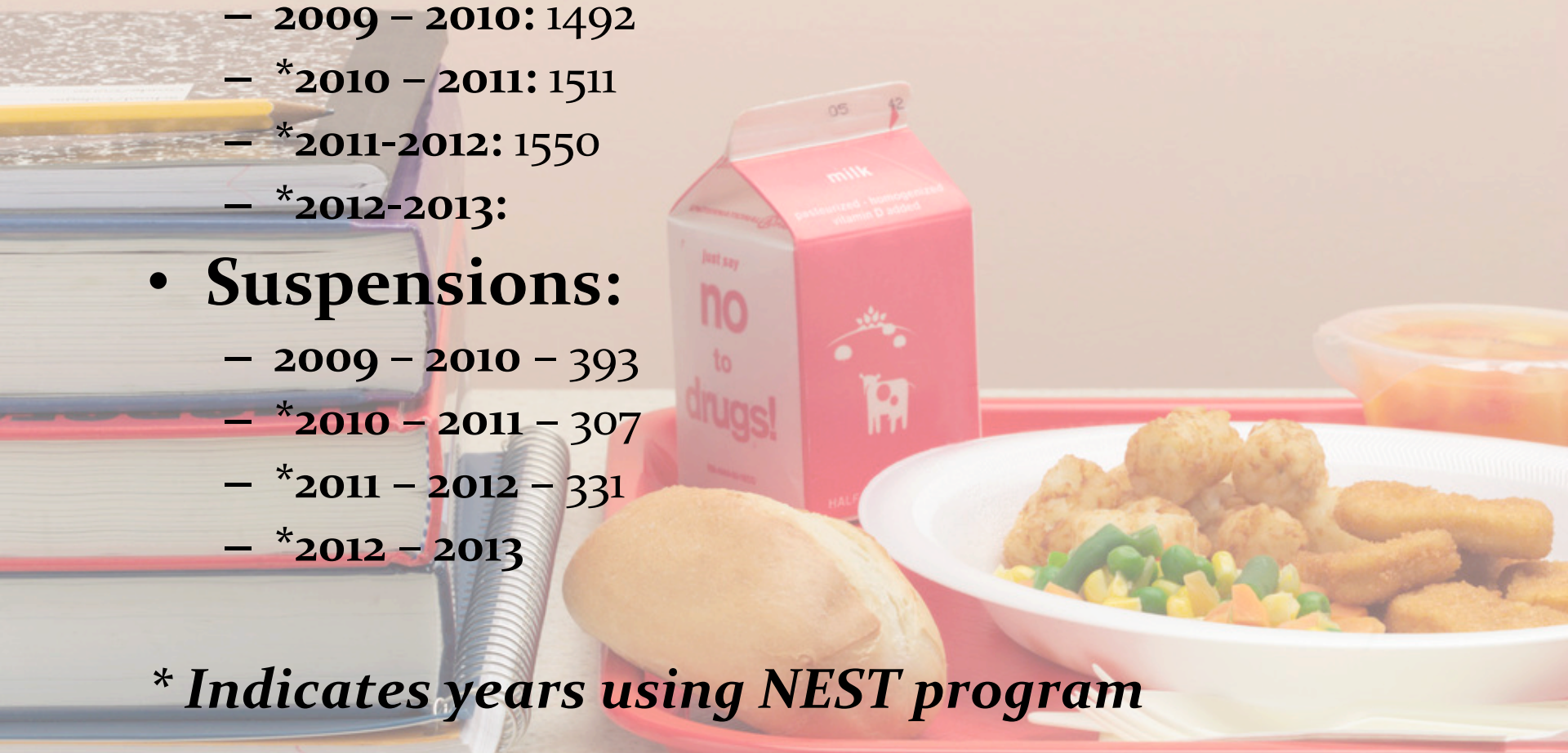
- **Office Referrals:**

- 2009 – 2010: 1492
- *2010 – 2011: 1511
- *2011-2012: 1550
- *2012-2013:

- **Suspensions:**

- 2009 – 2010 – 393
- *2010 – 2011 – 307
- *2011 – 2012 – 331
- *2012 – 2013

** Indicates years using NEST program*



Graduation Statistics

- Class of 2013
 - 563 Students
 - 554 Students successfully completed graduation requirements by May, 2013.
 - 560 Students successfully completed graduation requirements by August, 2013.
 - Of 3 students who had not fully completed, all 3 were students not in the building (therefore not able to take advantage of NEST opportunities).

Daily Bell Schedule

Alternating A/B Block Schedule

Homeroom: 8:05 – 8:10

1st block: 8:15 – 9:35

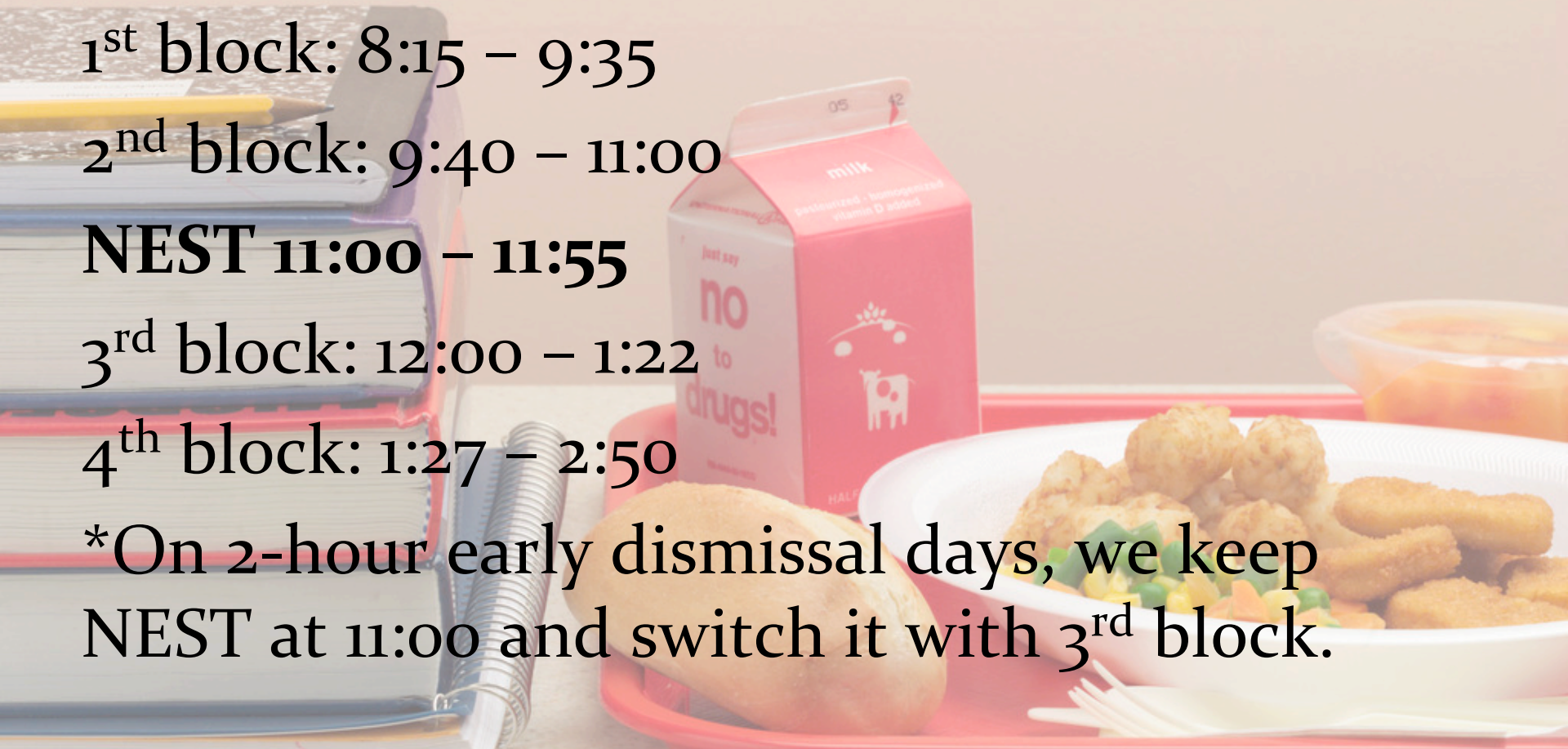
2nd block: 9:40 – 11:00

NEST 11:00 – 11:55

3rd block: 12:00 – 1:22

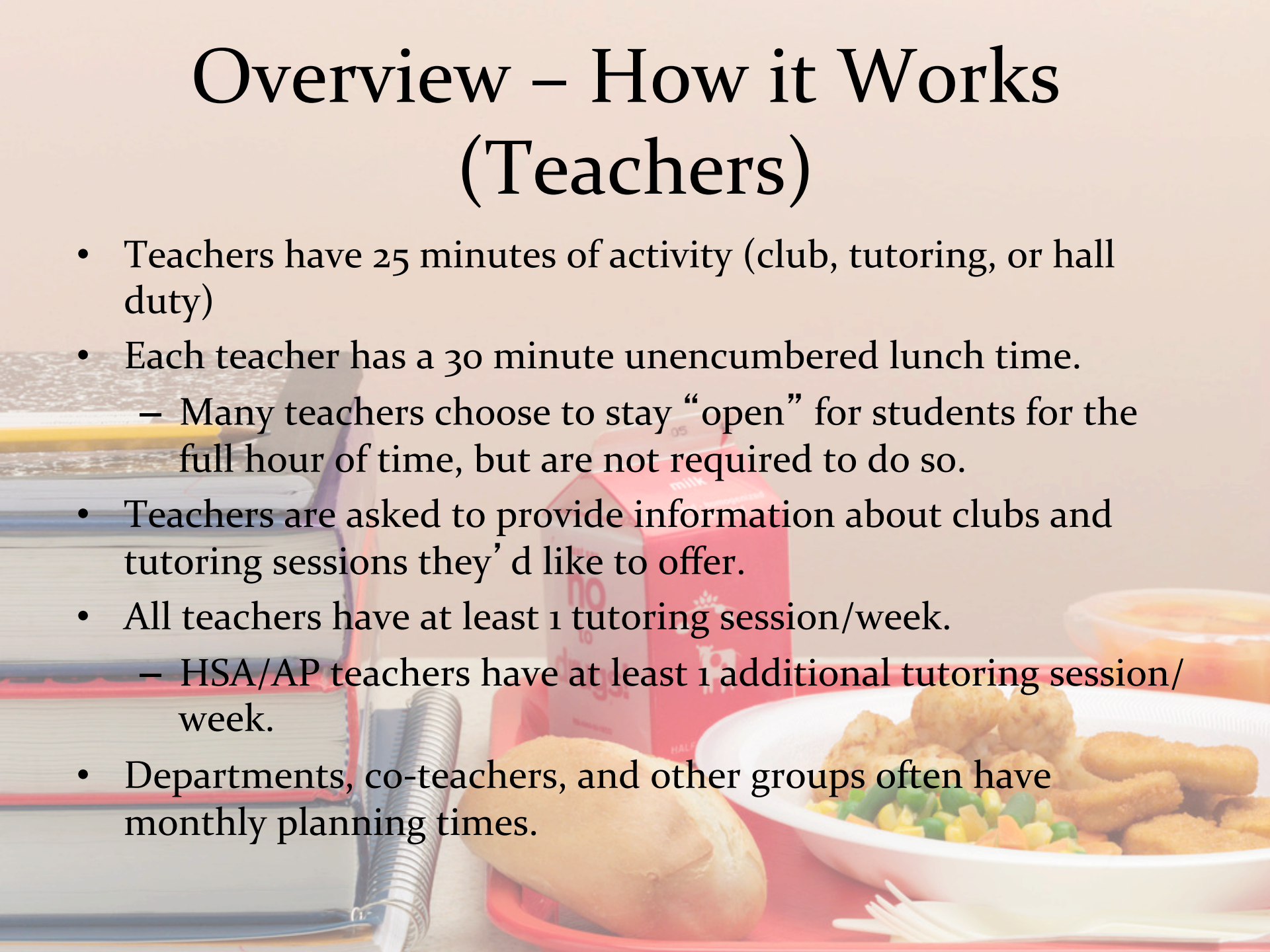
4th block: 1:27 – 2:50

*On 2-hour early dismissal days, we keep NEST at 11:00 and switch it with 3rd block.



Overview – How it Works (Teachers)

- Teachers have 25 minutes of activity (club, tutoring, or hall duty)
- Each teacher has a 30 minute unencumbered lunch time.
 - Many teachers choose to stay “open” for students for the full hour of time, but are not required to do so.
- Teachers are asked to provide information about clubs and tutoring sessions they’d like to offer.
- All teachers have at least 1 tutoring session/week.
 - HSA/AP teachers have at least 1 additional tutoring session/week.
- Departments, co-teachers, and other groups often have monthly planning times.



Overview – How it Works (Students)

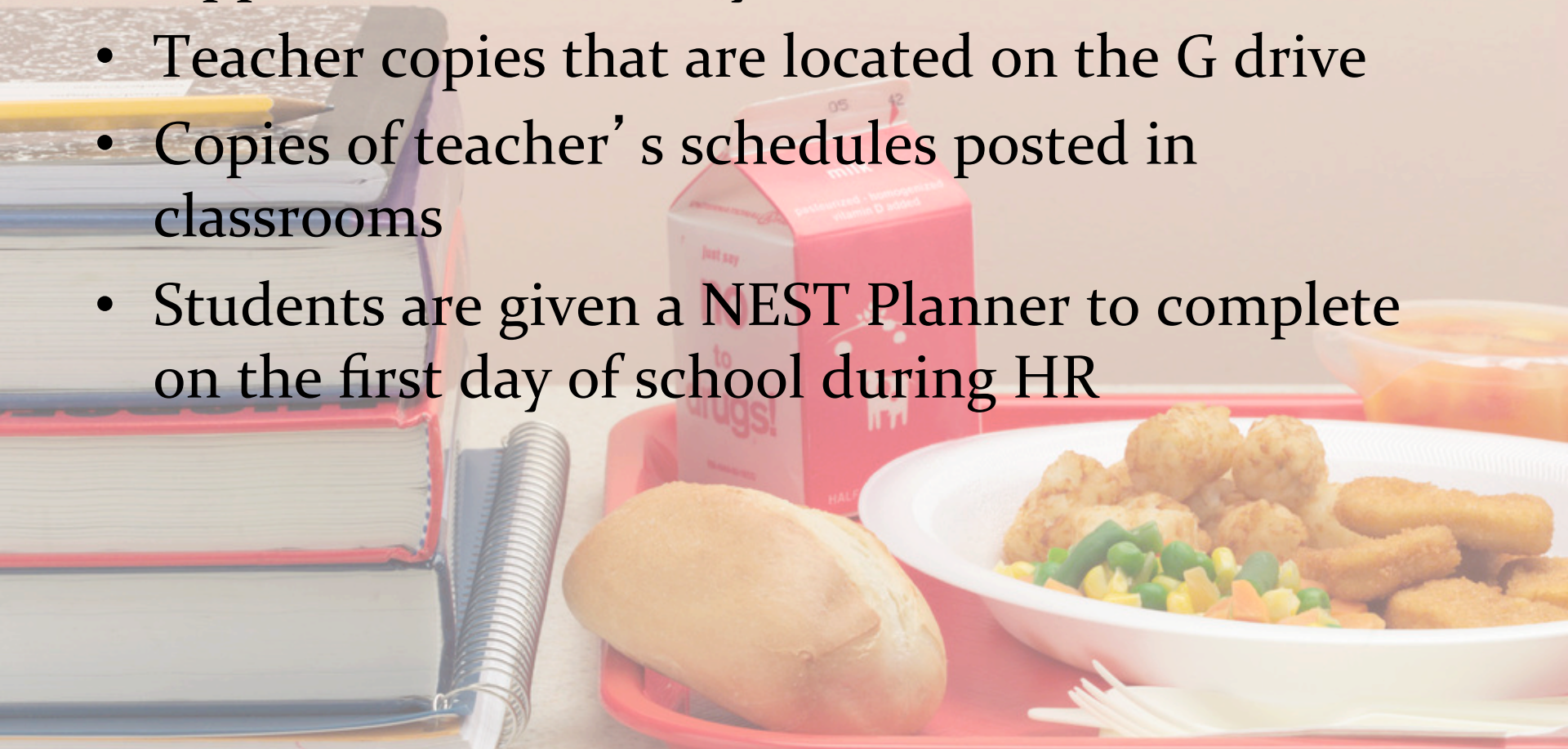
- Students are encouraged to use both “halves” of NEST (a tone sounds part way through NEST)
- Students can take lunch to most areas of the building for “Working lunch.”
- Students sign-in to teachers using electronic system (for data purposes)
- Students have free choice of spending the time with teachers or not (as long as grades and behavior are acceptable).

What is there to do for students?

- Students... can go to a quiet room and do their homework!
- GET extra tutoring and make that GPA count!
- PRACTICE for HSAs and pass the test!
- HAVE their hair and nails done in the salon!
- Clubs – there's something for everyone, from Comic Book Club to Gardening to Yard Games to Sports Reporting!
- “Free time” – time for socialization and to independently prepare for school activities and classes.

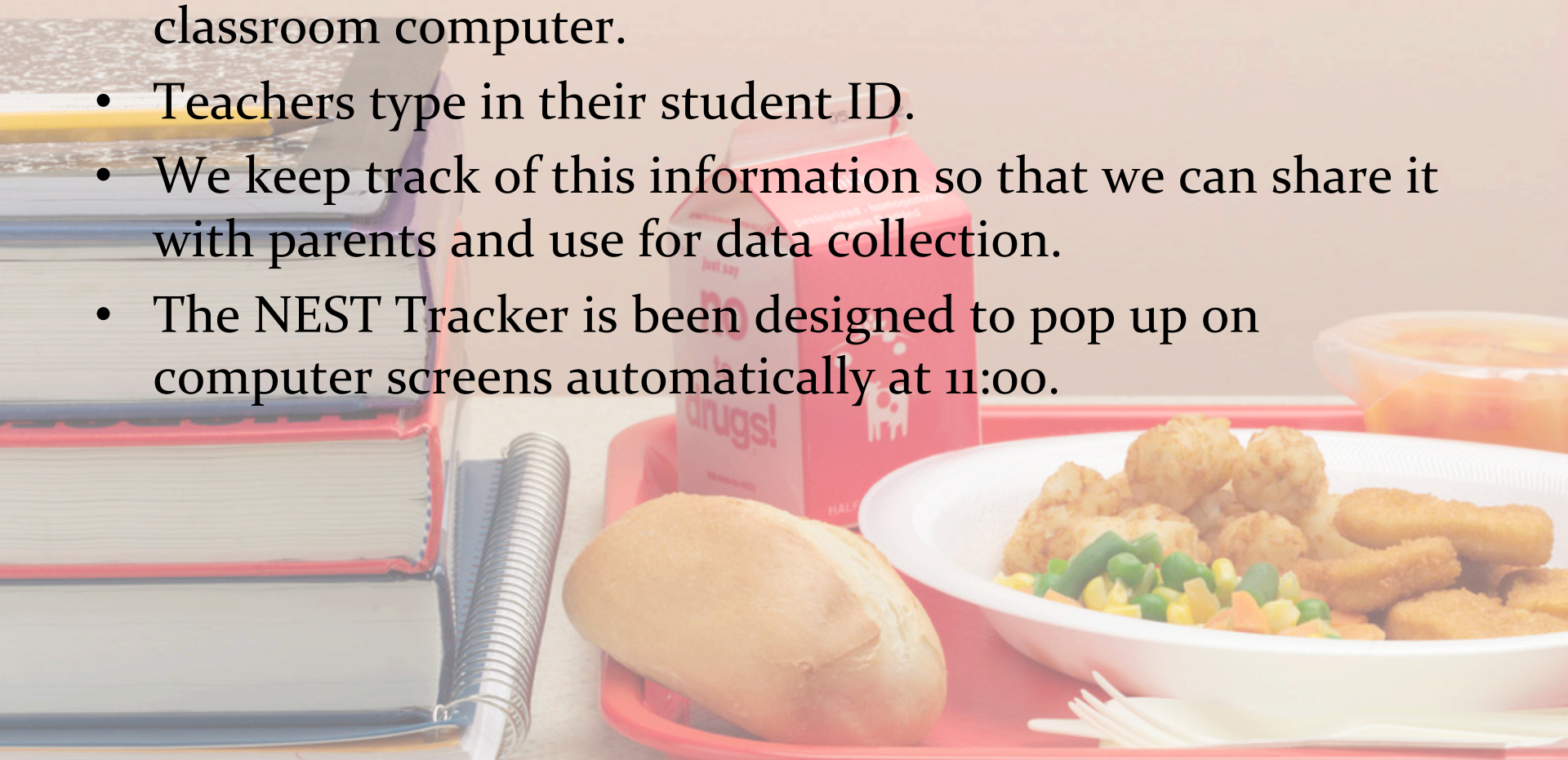
How do students know what is being offered?

- Posters in the hallway (Main Street “NEST Opportunities Hallway”)
- Teacher copies that are located on the G drive
- Copies of teacher’s schedules posted in classrooms
- Students are given a NEST Planner to complete on the first day of school during HR



NEST Tracker – Data Keeping

- When a student sees a teacher – whether it's for five minutes or the whole hour – they are checked in on the classroom computer.
- Teachers type in their student ID.
- We keep track of this information so that we can share it with parents and use for data collection.
- The NEST Tracker is been designed to pop up on computer screens automatically at 11:00.

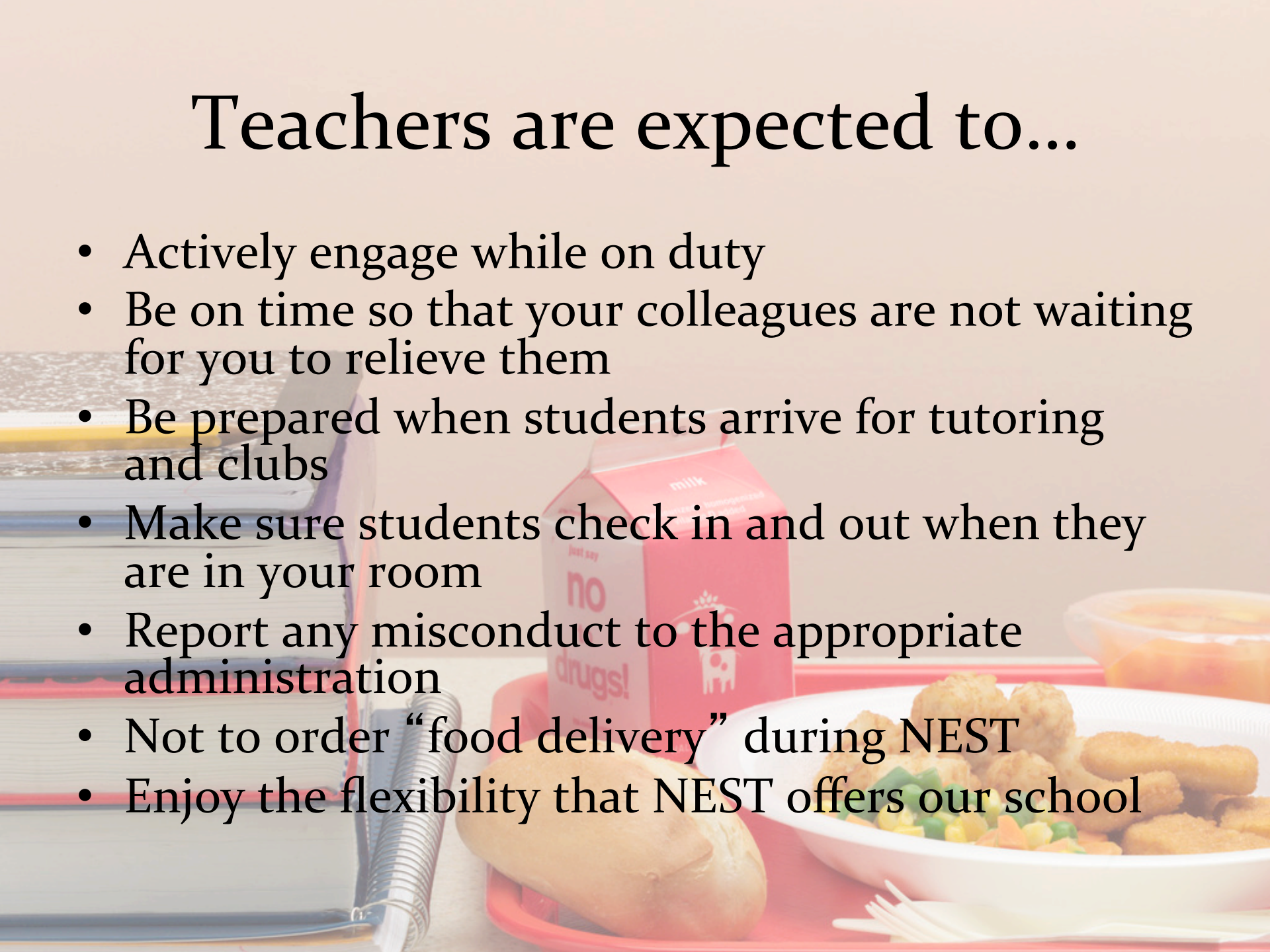


The students are expected to...

- Pick up their trash!! Special trashcans are throughout the building.
- Be RESPECTFUL to each other and ALL adults
- All school rules still apply – so NO phones or iPods (the same consequences will apply!)
- Stay out of off-limits areas: Gym, Victory Lane, Locker Rooms, Pool, Parking lots and vehicles.
- Not order “food delivery” during this time or anytime during the day.
- Referrals can result in loss of NEST Time for anywhere from one day up to the rest of the year!!

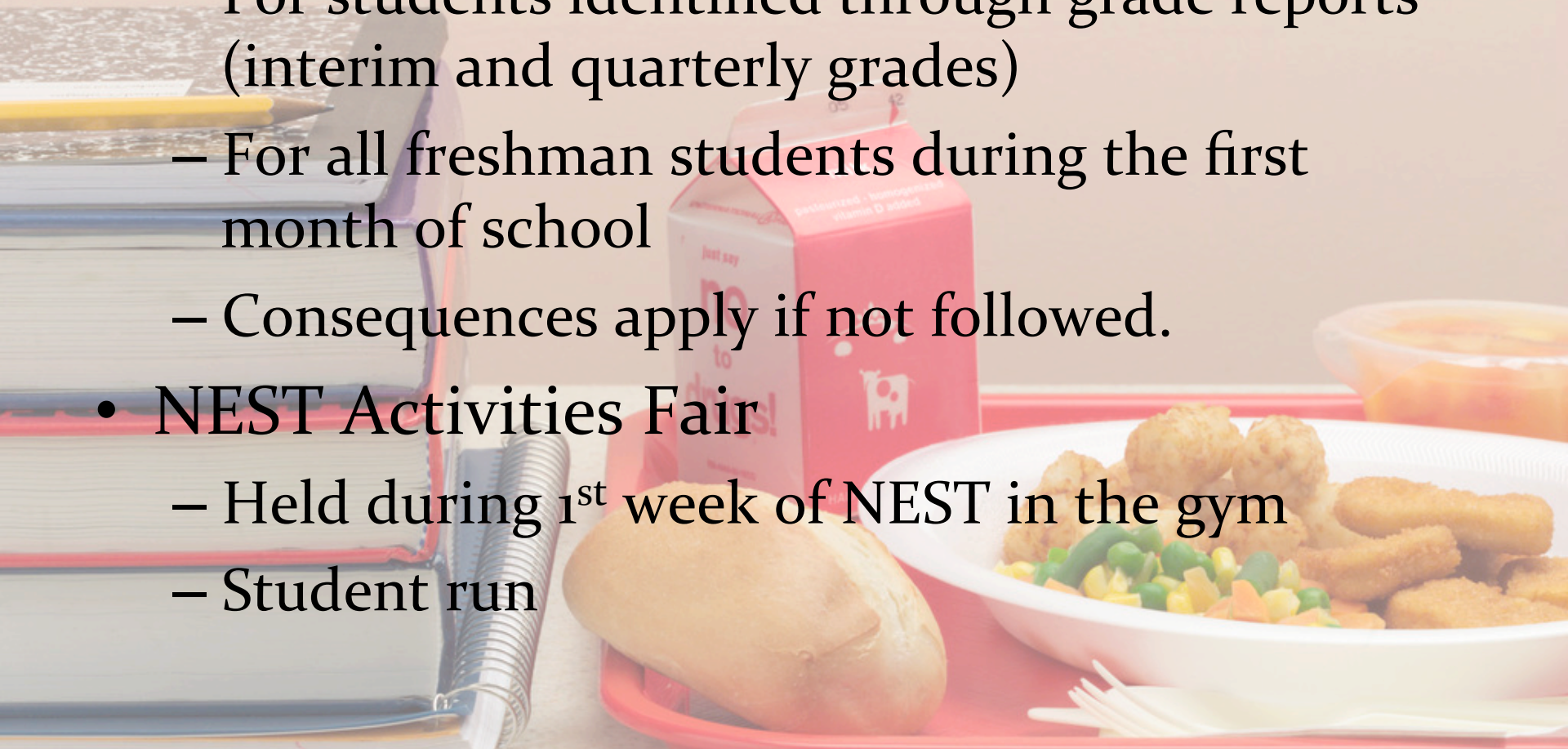
Teachers are expected to...

- Actively engage while on duty
- Be on time so that your colleagues are not waiting for you to relieve them
- Be prepared when students arrive for tutoring and clubs
- Make sure students check in and out when they are in your room
- Report any misconduct to the appropriate administration
- Not to order “food delivery” during NEST
- Enjoy the flexibility that NEST offers our school



Student Engagement with NEST

- “Mandatory NEST” program
 - For students identified through grade reports (interim and quarterly grades)
 - For all freshman students during the first month of school
 - Consequences apply if not followed.
- NEST Activities Fair
 - Held during 1st week of NEST in the gym
 - Student run



Notes of Consideration

- Building Services Concerns
 - Extra trash cans, trash bags
- Cafeteria Concerns
 - Meal Sales
- First week bell-schedule/Freshman transition plan



A school lunch tray is shown in the foreground, featuring a white bowl of chicken nuggets and mixed vegetables (corn, peas, and carrots), a golden-brown bread roll, and a small carton of milk. To the left of the tray is a stack of books with a yellow pencil resting on top. The background is a plain, light-colored wall.

Eagles SOARR
with
Professionalism
at NEST TIME!